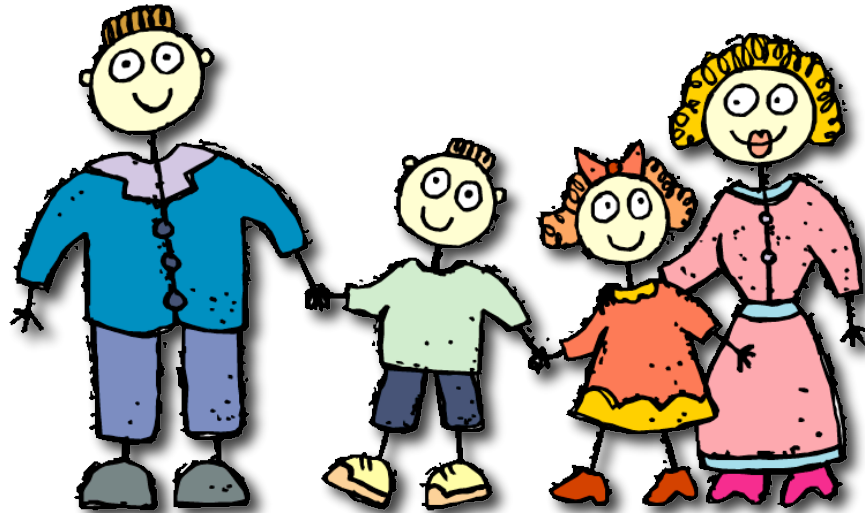


Name _____

FAMILY INCOME WORKSHEET

Family 1:



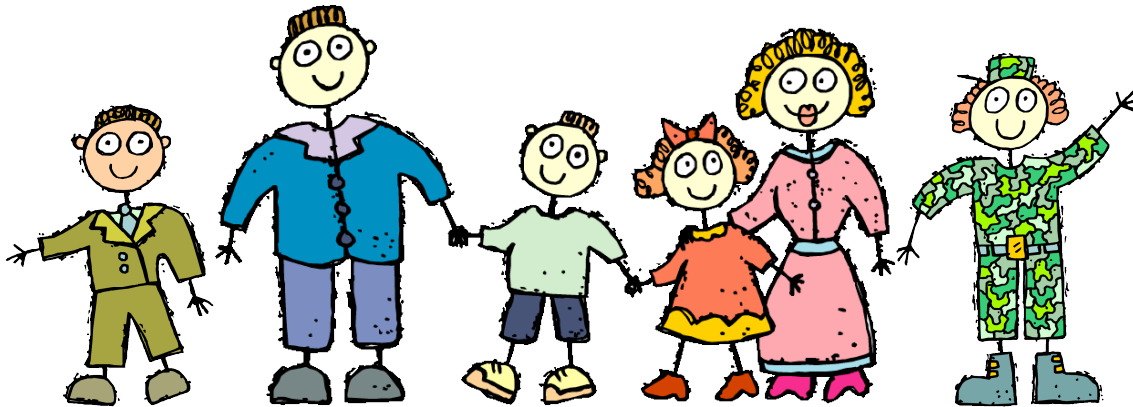
Family Member	Profession	Full/Part Time	Wage	Hours/Week
Dad	Truck Driver		\$780/week	
Mom	Seamstress	Part Time	\$12/hour	10 hours/week
Son (19 yrs)	Gas Station Clerk	Part Time	\$8.50/hour	20 hours/week
Daughter (17 yrs)	Ice Cream Store Clerk	Part Time	\$6.80/hour	12 hours/week

What was the total yearly income for Family 1? _____

Name _____

FAMILY INCOME WORKSHEET

Family 2:



Family Member	Profession	Full/Part Time	Wage	Hours/Week
Dad	Store Manager		\$615/week	
Mom	Writer		\$150/week	
Son (9 yrs)	No Income		\$7.00/hour	3 hours/week
Son (7 yrs)	No Income			
Daughter (4 yrs)	No Income			
Daughter (1 yr)	No Income			

What was the total yearly income for Family 2? _____

Name _____

FAMILY INCOME WORKSHEET

Family 3:



Family Member	Profession	Full/Part Time	Wage	Hours/Week
Mom	Lawyer		\$1875/week	
Son (21 yrs)	Mechanic		\$292/week	
Daughter (16 yrs)	Secretary	Part Time	\$7.85/hour	20 hours/week
Daughter (8 yrs)	No Income			

What was the total yearly income for Family 3? _____

KEY Family Income Worksheet

Family 1

Dad - $\$780/\text{week} \times 4 \text{ weeks} = \$3120/\text{month}$

Mom - $\$12/\text{hour} \times 10 \text{ hours/week} = \$120/\text{week} \times 4 \text{ weeks} = \$480/\text{month}$

Son - $\$8.50/\text{hour} \times 20 \text{ hours/week} = \$170/\text{week} \times 4 \text{ weeks} = \$680/\text{month}$

Daughter - $\$6.80/\text{hour} \times 12 \text{ hours/week} = \$81.60 \times 4 \text{ weeks} = \$326.40/\text{month}$

Monthly total $\$3120 + \$480 + \$680 + \$326.40 = \$4606.40/\text{month}$

Yearly Total for Family 1 $\$4606.40 \times 12 \text{ months} = \mathbf{\$55,276.80}$

Family 2

Dad - $\$615/\text{week} \times 4 \text{ weeks} = \$2460/\text{month}$

Mom - $\$150/\text{week} \times 4 \text{ weeks} = \$600/\text{month}$

Son - $\$7.00/\text{hour} \times 3 \text{ hours/week} = \$21/\text{week} \times 4 \text{ weeks} = \$84.00/\text{month}$

Monthly total $\$2460 + \$600 + \$84 = \$3144.00/\text{month}$

Yearly Total for Family 2 $\$3144.00 \times 12 \text{ months} = \mathbf{\$37,728.00}$

Family 3

Mom - $\$1875 \times 4 \text{ weeks} = \$7500/\text{month}$

Son - $\$292 \times 4 \text{ weeks} = \$1168/\text{month}$

Daughter - $\$7.85/\text{hour} \times 20 \text{ hours/week} = \$157/\text{week} \times 4 \text{ weeks} = \$628/\text{month}$

Monthly total $\$7500 + \$1168 + \$628 = \$9296.00/\text{month}$

Yearly Total for Family 3 $\$9296.00 \times 12 \text{ months} = \mathbf{\$111,552.00}$